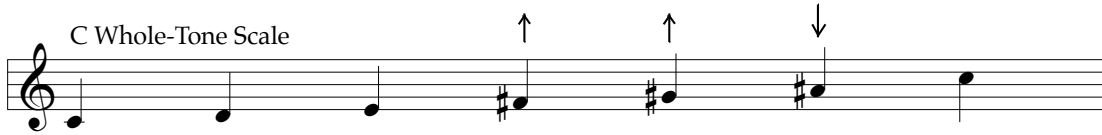
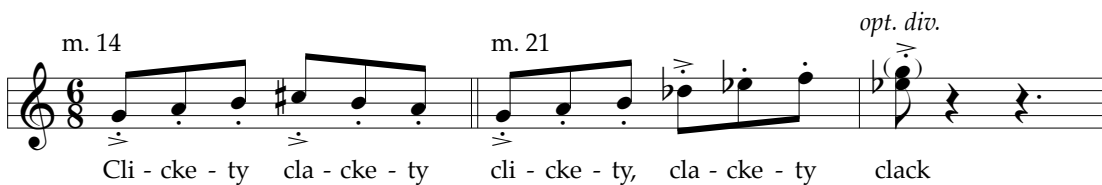


Teaching Suggestions

The primary scale used in this song is the whole-tone scale. The C whole tone scale is shown below. Sing this scale on a neutral syllable (like "la") slowly starting on any comfortable note. Since our ears have been well trained to hear major scales, the tendency will be to sing the fourth and fifth notes flat and the sixth note sharp. These notes are marked with arrows as a reminder to raise or lower the appropriate pitch. It is a great lesson to write the major and whole tone scales on the board and compare them, perhaps using a map of the piano keyboard, so that students can understand how the lack of half-steps gives the whole-tone scale a neutral feeling, a sense that there is no strong tonal center.



This scale is first encountered in measure 14 (only the first 4 notes) and the full scale in m. 21. Sing these passages slowly for proper intonation.



Another passage that may be a little unusual occurs in measure 29 where a major seventh is sung. Sing a major scale, making sure to raise the seventh step a bit as you normally would. Next, sing the scale again, having half the choir stay on "do" while the rest of the singers ascend to and then hold "ti." Listen to the lovely dissonance. Switch the two halves of the choir and repeat.

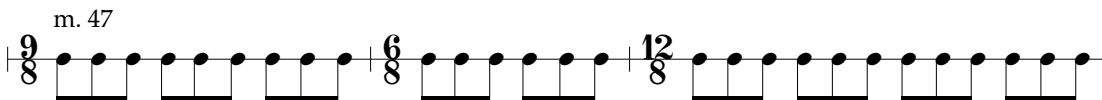
Now sing this interval as melodic major sevenths, skipping back and forth between "do" and "la." Now sing the passage in measure 33 on a neutral syllable, very slowly for accurate pitch.



Rhythm Practice

Internalize the feeling of 6/8 time by walking and speaking "tri-ple-ti" or "Ta-ta-ta" or any other syllables of your choosing to feel the triple subdivision of the beat.

Next, work on the section (piano part) in measure 47. First begin by counting "1 - 2 - 3 | 1 - 2 | 1 - 2 - 3 - 4" for the beat pattern of the three measures. Next, add the "tri-ple-ti" subdivisions.



Composing Practice

1. Have your students write simple melodies using the whole-tone scale.
2. Have your students write rhythms using 6/8 time. If they wish, allow them to change meter to 9/8 and/or 12/8.